

## POND FOUNTAIN PUMP



**PPF-1000**

**PPF-1500**

**PPF-2000**

**PPF-3800**

**PPF-5800**

To ensure your new pond pump system is set up and running correctly, and to prevent any accidental damage or injury, please read and follow the below instructions carefully before using your product.

## SAFETY

**IMPORTANT!** Disconnect the mains electricity supply before attempting any installation / maintenance of any kind. Do not attempt to modify this unit in any way and only use the recommended parts for replacement.

- The PPF system should never be run dry as this will cause the unit to overheat and cause permanent damage.
- All connections must be earthed.
- The power cord of this appliance cannot be replaced; if the cord is damaged, the appliance should be discarded. Never cut the cord.
- Do not connect to any voltage other than that stated.
- Do not place in liquids other than water.
- Do not use with water above 90°F or 30°C.
- Do not carry or pull the unit by its electrical cable.
- Do not use this unit if it has a damaged cord, if it is malfunctioning or it is dropped or damaged in any manner
- Do not attempt to modify this unit in any way and only use attachments and the recommended parts for replacement recommended by the manufacturer.
- Before installing, maintaining or handling your equipment, or before placing your hands in your pond, ensure that the unit is disconnected from the electricity supply.
- Always disconnect any electrical devices when not in use.
- Carefully examine your pond system after installation. Do not connect the unit to the mains if there is water on any parts not intended to be wet.
- To avoid injury, do not touch hot or moving parts such as, but not limited to impellers.

- During maintenance ensure all O-rings are present and intact.
- If the appliance shows any signs of water leakage or the RCD unit switches off, disconnect the unit from the power supply and consult the retailer where you purchased the unit.
- Do not install or store this unit where it will be exposed to temperatures near to 0°C / 32°F. In freezing conditions, remove and store the unit in a sheltered area ensuring all water has been drained from the filter.
- Do not bury the cord for this unit. Ensure it does not cause a trip hazard or it at risk from damage from lawn mowers, strimmers or other garden equipment.
- This is a submersible product - do not operate the product if not fully submerged.

**Please note** – this appliance can be used by children aged from 8 years and above and persons with reduced physical, sensory or mental capabilities or lack of experience and knowledge, provided they are given supervision and instruction concerning use of the appliance and understand the hazards involved. Children must not play with the appliance. Any maintenance must not be made by children without supervision.

## ELECTRIC

This unit comes complete with a generous supply of 3 core cable, however should any additional cable be required, the use of an approved waterproof cable connector with a proper rating is essential. A cord rated for less amperes or watts than the appliance rating may overheat.

### **Please Ensure:**

- The power supply must be earthed and fused at 3amps. You regularly inspect the cable for damage and deterioration. Do not connect to any voltage other than that stated. You consult a qualified electrician if in doubt about any aspects of wiring.
- A residential current device (RCD) is used for additional safety You have complied with Local Electricity Authority regulations if permanently installing to the mains supply.

**Please Ensure:** The power supply must be earthed and fused at 3amps. Regularly inspect the cable for damage and deterioration. Consult a qualified electrician if in doubt about any aspects of wiring.

## CHOOSING YOUR PUMP LOCATION

- The pressure of your unit can be affected by several factors, including pond depth, stock density, and hose dimensions. To maintain optimal water quality and avoid low return pressure, we recommend taking these factors into account during setup.
- Position the unit on a flat, stable surface at the bottom of your pond, ensuring the outlet is facing upwards.

# INSTALLATION & USE

Please read the following instructions carefully before setting up your pump.

**DO NOT CONNECT THE UNIT TO THE MAINS UNTIL SETUP IS COMPLETE AND THE UNIT IS FILLED WITH WATER.**

## 1. Inspect the Unit

Before installation, ensure the unit has not been damaged during transport. Handle with care.

## 2. Clean the Filter Foam

Remove the pump case and rinse the filter foam using pond water.

## 3. Attach the Required Fittings

Choose and connect the necessary attachments. The included fountain attachment set consists of:

- Extendable main fountain pole (required for fountain use)
- Hosetail nozzles
- Three fountain outlet attachments (PPF-3800 and PPF-5800 models include two) for different water effects

## 4. Position the Pump Unit

Fully submerge the PPF pump. Place it on a flat, stable surface at the bottom of the pond, with the outlet facing upward.

## 5. Connect to Mains Power

Use a residual current device (RCD) for added safety when connecting to the mains.

## 7. Switch On the Unit

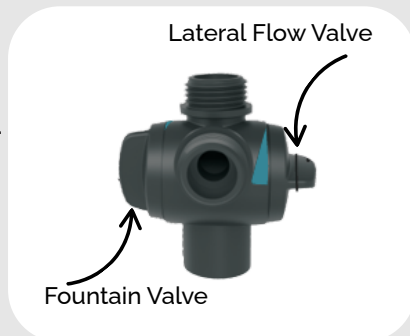
Turn on the unit at the mains to begin operation.

### Note:

The outlet flow is adjustable via two valves:

- One controls the water flow to the fountain.
- The other adjusts the lateral flow.

For optimal fountain performance, close the lateral flow valve to maximise water flow through the fountain.



## Using the PPF Unit as a Pump

If you wish to use the PPF unit solely for pumping water, remove the fountain attachments and connect the appropriate hosetail.

This unit is supplied with a stepped hosetail. If you are using a larger diameter hose, trim the hosetail to the correct size to prevent loss of water flow.



## MAINTENANCE

To ensure optimal performance and that your unit functions correctly, regular maintenance is essential. Failure to do so may result in damage to your unit and may invalidate your warranty.

We recommend that a regular cleaning and maintenance schedule is followed to ensure responsible fishkeeping. Depending on water volume and stocking levels, regular cleaning of the foams, impeller, inlet/outlet pipework will help ensure that the product works efficiently and your pond remains healthy.

For further maintenance guidance, please see the table and additional information below:

	1 MONTH	3 MONTHS	ANNUALLY
<b>All Pipework</b>	Clean & Inspect		
<b>Hosing</b>			Clean & Inspect
<b>O-Rings</b>	Clean & Inspect	Lubricate & Clean	
<b>Filter Foams</b>	Clean & Inspect		

## O-rings

It is vital that O-rings are regularly inspected and replaced as the rubber watertight seal will perish over time, which may cause your unit to leak. Before replacing your o-rings, ensure they are well lubricated to ensure the seal is kept water tight.

## Pump Maintenance

In general, it is recommended to disconnect your pump and clean the pipes, impeller, and filter foam monthly. Over time, pipework can become blocked with waste and protein slime, so regular cleaning is essential for optimal performance.

The frequency of cleaning and inspecting your unit will, of course, depend on several factors, such as water quality, pond volume, and the number of fish you have. How often you feed your fish and seasonal light levels will also affect how quickly your pond water becomes dirty. These factors should be taken into consideration when planning your filter maintenance schedule.

## General Maintenance

It is recommended that every 3-4 weeks you perform maintenance on the PPF fountain pumps.

### Turn off the power

Always disconnect the unit from the mains before performing any maintenance.

### Remove the fountain attachment

Detach the fountain from the pump.

### Open the pump casing

Unfasten the clips and carefully remove the pump casing.

### Clean the pump casing and sponge

Use a soft brush and pond water to clean the pump casing and sponge.

### Clean the impeller

Remove the pump from the unit to access the impeller. Clean away any dirt or debris that may have built up.

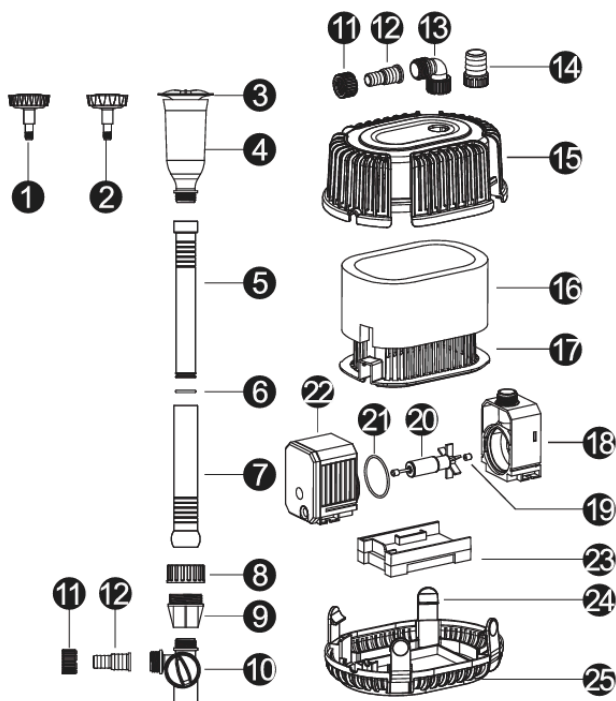
### Clean body and all attachments. Reassemble.





# PARTS DIAGRAM

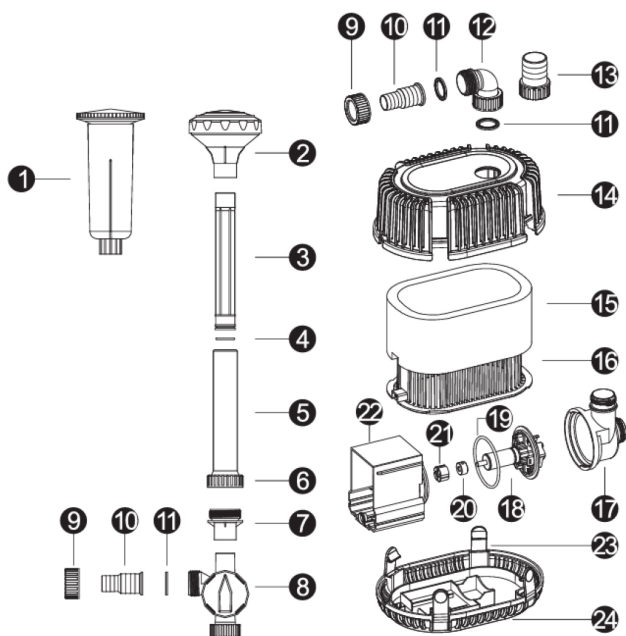
## PPF-1000, PPF-1500, PPF-2000



1	NOZZLE 1	10	T OUTLET	19	RUBBER BEARING
2	NOZZLE 2	11	HOSETAIL NUT	20	IMPELLER
3	NOZZLE 3	12	STEPPED HOSETAIL	21	PUMP O-RING
4	NOZZLE BASE	13	ELBOW CONNECTOR	22	PUMP
5	FOUNTAIN EXTENTION PIPE	14	HOSETAIL	23	PUMP HOLDER
6	FOUNTAIN O-RING	15	FILTER CASING	24	CLIP
7	FOUNTAIN PIPE	16	SPONGE	25	FILTER BODY
8	FIXING NUT	17	BASE PLATE		
9	CONNECTOR	18	IMPELLER COVER		

# PARTS DIAGRAM

## PPF-3800, PPF-5800



1	NOZZLE 1	10	STEPPED HOSETAIL	19	O-RING
2	NOZZLE 2	11	GASKET	20	RUBBER BEARING
3	FOUNTAIN EXTENTION PIPE	12	ELBOW CONNECTOR	21	BEARING SLEEVE
4	FOUNTAIN O-RING	13	HOSETAIL	22	PUMP
5	FOUNTAIN PIPE	14	FILTER CASING	23	CLIP
6	FIXING NUT	15	SPONGE	24	FILTER BODY
7	CONNECTOR	16	BASE PLATE		
8	T OUTLET	17	IMPELLER COVER		
9	HOSETAIL NUT	18	IMPELLER		

## TROUBLESHOOTING

### My Pond Water is Cloudy/Brown

1. Make sure the unit is turned on 24 hours a day. Continuous running is needed to maintain a clean and healthy pond.
2. Remove pond waste and leaves and carry out a partial water change. If sludge is present treat your pond with AllPondSolutions Anti Sludge treatment.

### Green Water or Cloudy/Brown Water?

In order to correctly identify if you have green water or cloudy/brown water, a settlement test should be carried out.

Take a jar of pond water and allow to settle for 24 hours.

**Green Tinge** - If your jar is showing mostly green tinged water or has green particles floating in it, you most likely have a bit of an algae problem (follow the green water trouble shooting guide).

**Brown Tinge / Water with Sediments** - this indicates that you have organic debris decomposing in your pond. This can be particles from dead leaves, twigs and other plant debris that are breaking down (follow the brown water trouble shooting guide).

### Poor Fountain Performance

1. **Reduced height** - extend the fountain attachment.
2. **Lime scale / waste build up** - clean flow adjusters and fountain head.
3. **Waste blockage** - remember to keep your unit raised slightly above the floor level in your pond to help reduce the waste pulling through the filter.

If none of the above resolves your issue, or you require spare parts for your filter, please contact the supplier of your unit.

# SPECIFICATIONS

MODEL	PPF-1000	PPF-1500	PPF-2000
MAX HEIGHT (m)	1.5 m	1.8 m	2 m
MAX FLOW RATE	1000 L/H	1500 L/H	2000 L/H
OUTLET FITS:	13mm, 16mm and 19mm hose		
WATTAGE:	20W	25W	35W
VOLTAGE:	220-230V ~50Hz		

MODEL	PPF-3800	PPF-5800
MAX HEIGHT (m)	2.8 m	4.8 m
MAX FLOW RATE	3600 L/H	5200 L/H
OUTLET FITS:	19mm, 25mm and 32mm hose	
WATTAGE:	20W	40W
VOLTAGE:	220-230V ~50Hz	

## WARRANTY

The AllPondSolutions PPF Pump is guaranteed against defects in material or workmanship under normal pond usage and comes with 24 months warranty for all electrical parts. The warranty period commences from the date of purchase. If you require support on how to use your unit, replacement parts or if your filter develops a fault during the warranty period, please contact the supplier of your unit.

Non-replaceable, non-perishable and non-serviceable parts will be repaired or replaced free of charge, once the unit is returned with all components along with a valid proof of purchase and postage paid. We reserve the right to replace or repair the unit at our discretion.

Please be aware that perishable parts that are subject to normal wear and tear, such as impellers, impeller covers, motor seals, are not covered by your warranty and a charge may be required for replacements of these.

This warranty does not apply to any unit that has been subjected to misuse, accidental damage, negligence, tampering or customisation. It does not apply to units which have been assembled incorrectly, improperly maintained, or where the instructions and safety information in this manual has not been followed correctly.

No liability is assumed with respect to loss or damage to livestock or personal property irrespective of the cause thereof.

Please ensure that only genuine AllPondSolutions components are used when completing a replacement or repair. Spare parts are available at our official website or from your local supplier.

Before returning your unit under warranty terms, check that all setup and maintenance instructions have been correctly followed. If you are in doubt, please contact your local aquatic retailer for further advice before returning the product.

**This does not affect your statutory rights.**



**[www.allpondsolutions.co.uk](http://www.allpondsolutions.co.uk)**

All Pet Solutions Limited Trading as All Pond Solutions  
22 Wycombe End, Beaconsfield, Buckinghamshire,  
England, HP9 1NB