



EF-150 AQUARIUM EXTERNAL FILTER



AQUARIUMS UP TO 150L

3 GRADES OF FILTER FOAM

BIOLOGICAL MEDIA

EASY TO MAINTAIN



SAFETY

Important! Disconnect the mains electricity supply before attempting any installation / maintenance or handling of any kind.

- The EF-150 should never be run dry as this will cause the unit to overheat and cause permanent damage.
- Do not attempt to modify this unit in any way and only use the recommended parts for replacement.
- All connections must be earthed.
- Do not connect to any voltage other than that stated.
- Do not use with any liquids other than water.
- Do not use with water above 90F or 30C.

Please note:

This appliance can be used by children aged from 8 years and above and persons with reduced physical, sensory or mental capabilities or lack of experience and knowledge if they have been given supervision or instruction concerning use of the appliance in a safe way and understand the hazards involved. Children shall not play with the appliance. Cleaning and user maintenance shall not be made by children without supervision.

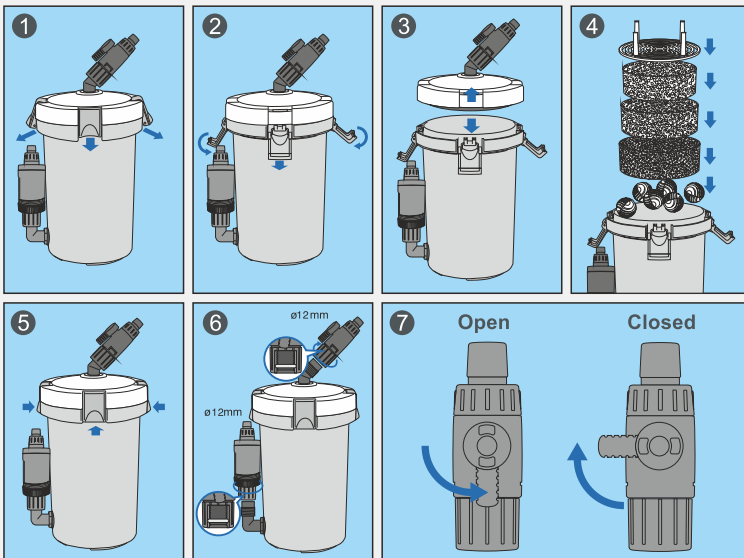
ELECTRIC

The EF comes complete with a generous supply of 3 core cable, however, should any additional cable be required then the use of an approved waterproof cable connector is essential.

- The power supply must be earthed and fused at 3amps.
- Regularly inspect the cable for damage and deterioration.
- Consult a qualified electrician if in doubt about any aspects of wiring.

INSTALLATION GUIDE

- 1 Remove the EF-150 head by unfastening the clips (*images 1, 2 and 3*).
- 2 Check that your media is inserted correctly inside the filter (you may substitute the media if required) (*image 4*).
- 3 Prime the EF-150 by filling the body with aquarium water.
- 4 Replace the EF-150 head and make sure the head is seated correctly and tightly (*image 5*).
- 5 Check that both the inlet tap and pump outlet are tightly screwed on to the EF-150 connection points.
- 6 Attach the filter hose to both the pump outlet and tap inlet (cut to size).
- 7 Attach the EF-150 inlet pipework to the tap inlet hose, and the outlet pipework to the pump outlet hose.
- 8 Position both the inlet and outlet pipework on the rim of your tank.
- 9 Ensure the tap inlet is open (tap facing down) (*image 7*)
- 10 Plug the EF-150 in, you will notice that the outlet fills up immediately but the inlet only has water streaming through it rather than being filled.
- 11 To complete the priming of the EF-150, shut the inlet tap off for 1-2 seconds and then wait a few seconds before repeating again. You will now observe the inlet hose filling with water from the tank end of the hose to the filter end of the hose.



MAINTENANCE

We recommend that a regular cleaning and maintenance schedule is followed to ensure responsible fishkeeping. Depending on water volume and stocking levels, regular cleaning of the filter media, foams, impeller, inlet/outlet pipework during a 10-25% water change will help ensure that the product works efficiently and the aquarium remains healthy.

Cloudy water

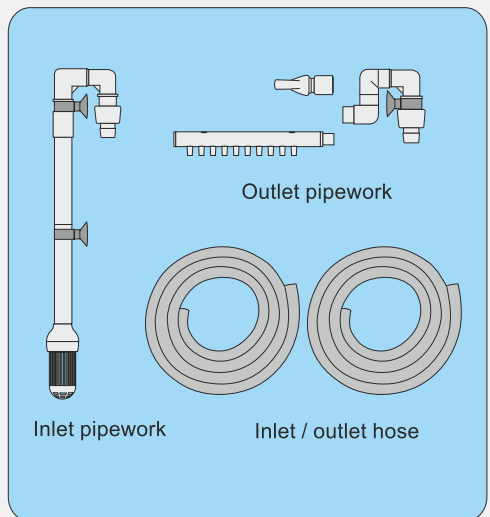
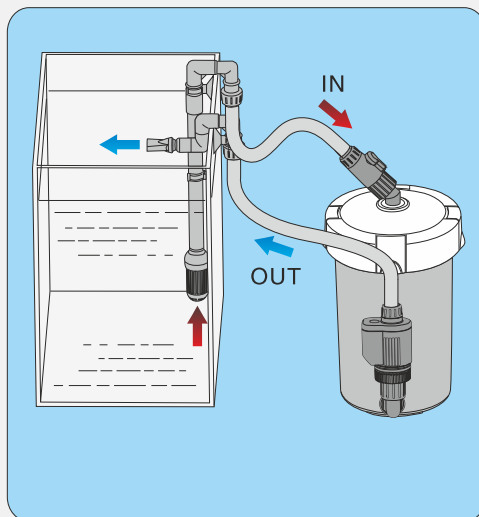
To access the impeller and shaft:

- 1 Unscrew the pump from the outlet of the filter body.
- 2 Unscrew the bottom of the pump.
- 3 Pull the impeller guard free, the impeller and shaft will come out attached to this.

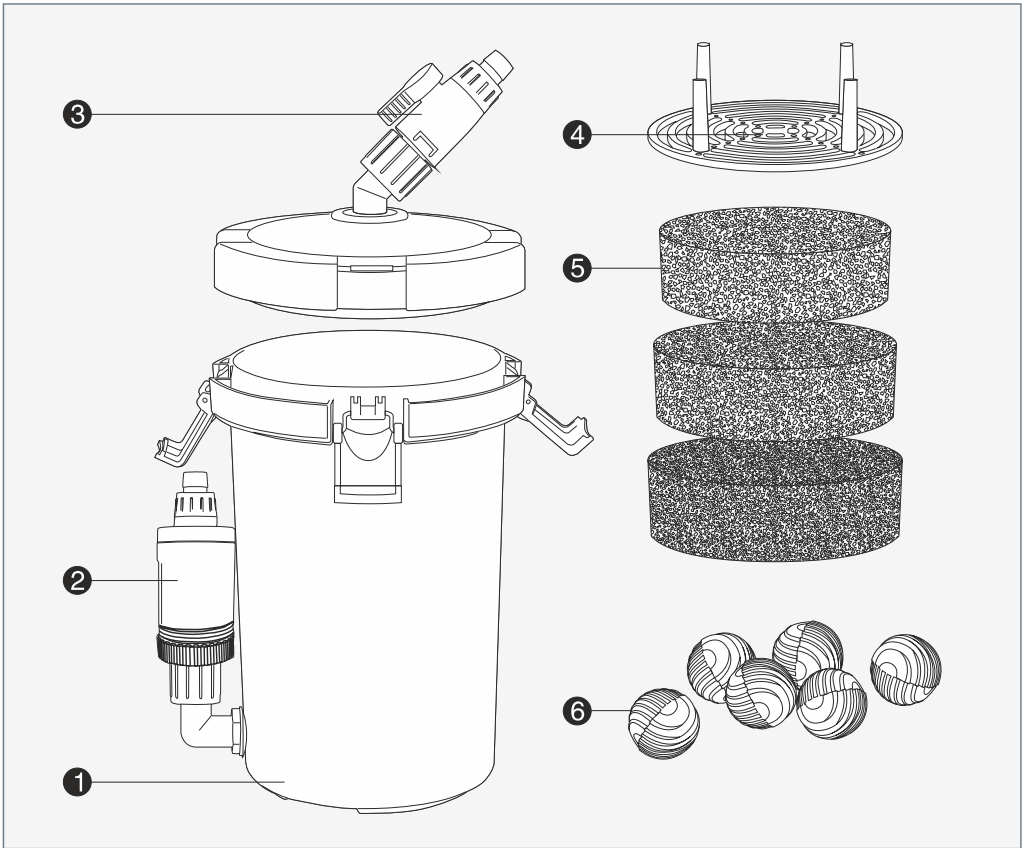
Check the condition of the impeller and shaft and clean using your aquarium water. Clean inside the impeller housing and ensure the shaft rubbers are in place at both ends before replacing. If the impeller or shaft has visible damage contact your local retailer to purchase replacements.

Reverse the above steps to replace.

OPERATION



PARTS DIAGRAM



1	FILTER BODY	4	FILTER GRATE
2	OUTLET PUMP	5	FILTER FOAMS
3	INLET TAP	6	BIO BALLS

SPECIFICATIONS

VOLUME	2.3 Litres
FLOWRATE	400L/H
POWER	6W
HEIGHT MAX	0.85m
HOSE LENGTH	140mm x 2 (approx)
DIMENSIONS	165 x 165 x 295mm

TROUBLESHOOTING

No Motor Operation

- 1 Check power supply is connected and turned on.
- 2 Ensure the EF-150 impeller is correctly installed, undamaged and free from blockage (as per the maintenance section).
- 3 Check cable for damage - if damage is evident unplug unit and do not use the EF-150. Do not attempt to fix, consult an electrician or other qualified person.
- 4 Replace fuse if necessary.

Priming Problems

If air remains trapped in the system after initial setup, please restart the process and follow these guidelines:

- 1 Check all hosing and pipework is connected correctly, air tight and unrestricted.
- 2 Reattach the inlet tap and outlet pump to ensure these are securely attached.
- 3 Where possible ensure all inlet / outlet pipework connection points are fully submerged whilst priming.
- 4 Ensure the EF-150 is not blocked with dirty media etc. Remove all media and clean through.
- 5 Clean the impeller and shaft as per the maintenance section.
- 6 Fill the EF-150 with aquarium water and retry.

Restricted Water Flow

- 1 Ensure the EF-150 impeller is correctly installed, undamaged and free from blockage (as per the maintenance section).
- 2 Check all hosing, inlet tap and outlet pump are connected correctly, air tight and unrestricted.
- 3 Check the EF-150 body, filter media, hosing and all pipework for a build-up of restrictive waste and clean if required.

Still have issues?

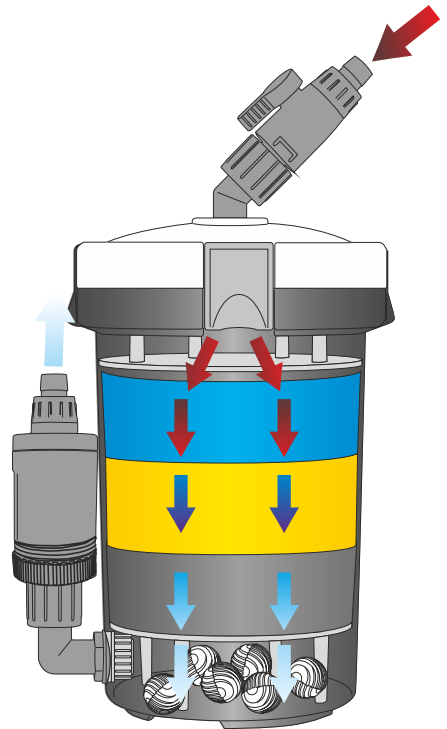
Contact the retailer you purchased this All Pond Solutions product from for further assistance.

WARRANTY

The All Pond Solutions EF-150 is supplied with a warranty guaranteeing parts in the event of a genuine fault or mechanical failure for 12 months from the date of purchase.

We do not accept liability for wear and tear, accidental damage or problems arising from modification or misuse. Spare parts are available at our official website or from your local supplier.

Please ensure that only genuine All Pond Solutions components are used when completing a replacement or repair.





www.allpondsolutions.co.uk