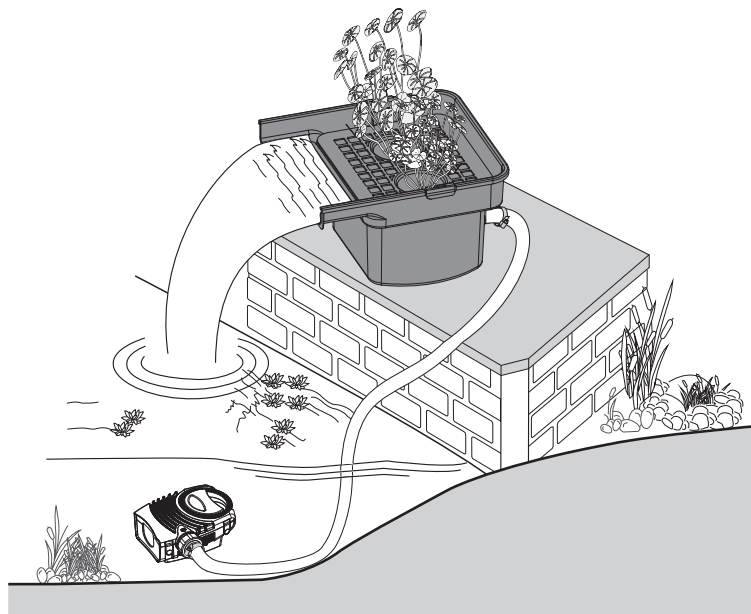


4. One end of the pipe is connected to the pump(or filter) outlet and the other end to the inlet and tightened. Put the pump into the pond, and install the product on the base (appropriate height: within 80cm from the water surface height).

- Note: ① This product does not include pump, pipe, pipe clip, need to be purchased separately.
 ② Please check to make sure that the entire perimeter where the product is placed is flat to prevent it from falling. 1-2cm below the front of the product incline is better.
 ③ Water-growing flowers can be planted on the planted sponge (as shown in the picture).
 ④ To make the whole structure look more professional and realistic, some natural materials can be used to cover the products and pipes(such as stone, turf, etc.).

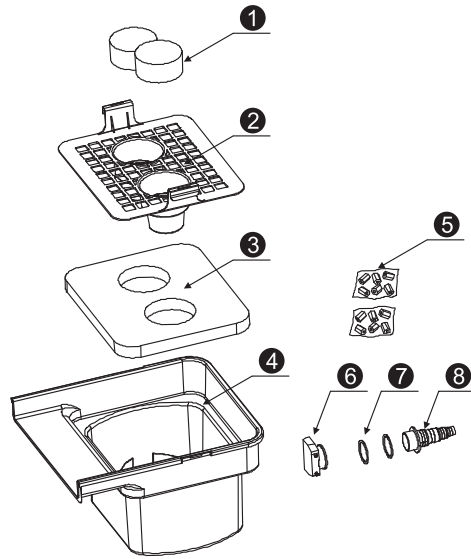
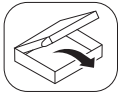


Model	CWF-400	Inlet hose adapter	20/25/32/38mm
Max-output	14000L/h	Width of outlet	400mm

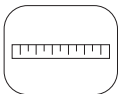
CWF-400 Instruction WATERFALL FILTER

Before operating this appliance, please read this instruction manual completely and keep it handy for future reference.

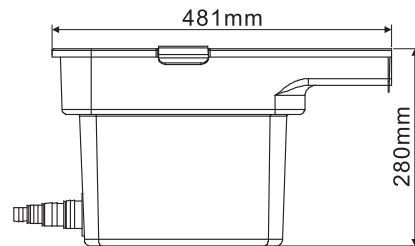
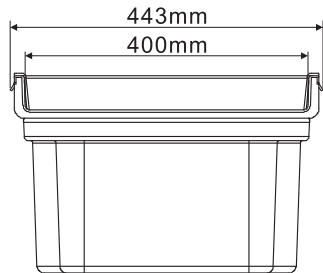




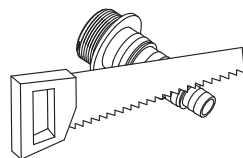
1	Planted sponge
2	Plate
3	Bio sponge
4	Container
5	Bio ring
6	Fastening nut
7	Gasket
8	Inlet



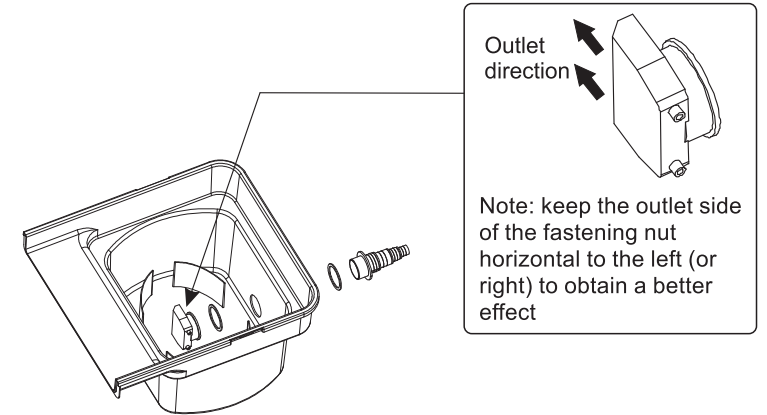
KG 4.05kg



1. For maximum amount of water, pls cut the interface as shown on the right. Please refer to the diameter of the water pipe for specific dimensions. Suggestion: Use the maximum diameter water pipe compatible with the pump to achieve the maximum flow rate.



2. Install the fastening nut, gasket(2) and inlet as shown in the figure below.



3. Put the bio ring and sponge into the container in turn, then put on the plate, and fasten the container with the clips at both end, finally, put the planted sponge (if cleaning, the order is reversed).
Note: According to the purchase note, step 5 may be planted sponge or other biochemical material (take planted sponge as an example).

