

AllPondSolutions®  
aquarium range



# SKIM-1 AQUARIUM SURFACE SKIMMER



EFFECTIVE SURFACE  
WATER FILTRATION

ELIMINATES SURFACE DUST,  
OILS AND FOOD

FOR AQUARIUMS UP TO 250L

FLOW RATE ADJUSTABLE



## SAFETY

**Important!** Disconnect the mains electricity supply before attempting any installation / maintenance of any kind.

- The SKIM-1 pump should never be run dry as this will cause the unit to overheat and cause permanent damage.
- Do not attempt to modify this unit in any way and only use the recommended parts for replacement.
- All connections must be earthed.
- Do not connect to any voltage other than that stated.
- Do not use with any liquids other than water.
- Do not use with water above 90F or 30C.

**Please note:**

This appliance can be used by children aged from 8 years and above and persons with reduced physical, sensory or mental capabilities or lack of experience and knowledge if they have been given supervision or instruction concerning use of the appliance in a safe way and understand the hazards involved.

Children shall not play with the appliance. Cleaning and user maintenance shall not be made by children without supervision.

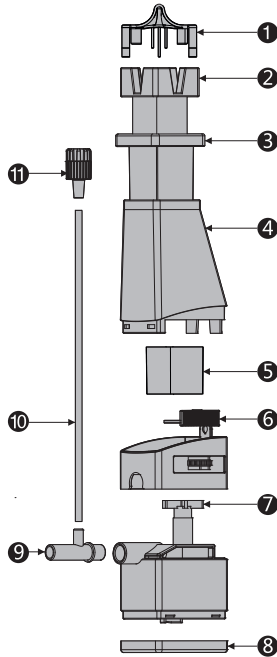
## ELECTRIC

The SKIM-1 comes complete with a generous supply of 3 core cable, however, should any additional cable be required then the use of an approved waterproof cable connector is essential.

### **Please Ensure:**

- The power supply must be earthed and fused at 3amps.
- Regularly inspect the cable for damage and deterioration.
- Consult a qualified electrician if in doubt about any aspects of wiring.

## PARTS DIAGRAM

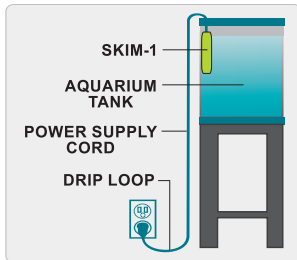


1	SURFACE STRAINER	7	IMPELLER
2	FLOAT	8	PUMP COVER
3	FLOAT BASE	9	OUTLET
4	SKIMMER BODY	10	VENTURI PIPE
5	SPONGE	11	VENTURI ADJUSTER
6	FLOW RATE ADJUSTER		

## INSTALLATION AND USE

- 1 Unbox the SKIM-1 and check all parts are present.
- 2 Wash the filter foam through until clear with aquarium water and place into the top area of the SKIM-1.
- 3 Place the surface strainer inside the top area of the SKIM-1 above the filter foam.
- 4 If required, connect the venturi air pipe to the top connector on the outlet.
- 5 Position the SKIM-1 inside you aquarium against the aquarium glass using the included suction cup attachments.
- 6 Make sure when positioning the SKIM-1 that the surface strainer is able float up and down with the surface level.
- 7 Insert the SKIM-1 plug into the mains, ensure you have a drip loop present (*see image 1*).
- 8 If required, adjust the surface strainer height using the dial on the front of the SKIM-1 (*see image 2*).
- 9 If you attached the venturi air pipe, adjust the flow of oxygen / bubbles by twisting the venturi adjuster (*see image 3*).

*image 1*



*image 2*



*image 3*



## SPECIFICATIONS

<b>MODEL</b>	<b>SKIM-1</b>
<b>LITRES/HOUR</b>	300L/h
<b>POWER</b>	3w
<b>HEIGHT MAX</b>	0.6m
<b>VOLTAGE</b>	220-240V/50Hz

## MAINTENANCE

We recommend that a regular cleaning and maintenance schedule is followed to ensure responsible fishkeeping.

Depending on water volume and stocking levels, regular cleaning of the filter foam, impeller entrance area, surface strainer and outlet pipework during a 10-25% water change will help ensure that the product works efficiently and the aquarium remains healthy.

Regular replacement of the filter foam will also ensure the optimum performance of the unit.

## TROUBLESHOOTING

### No Or Even Low Water Flow

- 1 Check the SKIM-1 is plugged in and has power.
- 2 The surface strainer must be positioned so it can float up and down on the surface level and intake water.
- 3 Clean the filter foam as this may be blocked.
- 4 Visually check the impeller area from the top. The filter foam should stop any large debris entering this area, but in case it has, remove it.

### Motor Shows No Power

- 1 Check the SKIM-1 is plugged in and has power.
- 2 Visually check the impeller area from the top. The filter foam should stop any large debris entering this area, but in case it has, remove it.

### Excessive Noise

- 1 Visually check the impeller area from the top. The filter foam should stop any large debris entering this area, but in case it has, remove it.
- 2 Turn down the venturi air intake by turning the venture adjuster.

### Still have issues?

Contact the retailer you purchased this All Pond Solutions product from for further assistance.

## WARRANTY

The All Pond Solutions SKIM range is supplied with a warranty guaranteeing parts in the event of a genuine fault or mechanical failure for 12 months from the date of purchase.

We do not accept liability for wear and tear, accidental damage or problems arising from modification or misuse.

Spare parts are available at our official website or from your local supplier. Please ensure that only genuine All Pond Solutions components are used when completing a replacement or repair.



[www.allpondsolutions.co.uk](http://www.allpondsolutions.co.uk)