



PRESSURISED POND FILTER

**PF-8000 / 12000
/ 20000**



BIO-MECHANICAL FILTRATION

BUILT IN STERILISER

LARGE FILTER VOLUME

PRESSURISED CLOSED SYSTEM

SIMPLE USER FRIENDLY OPERATION

To ensure your new pond filter is set up and running correctly, and to prevent any accidental damage or injury, please read and follow the below instructions carefully before using your product.

SAFETY

IMPORTANT! Disconnect the mains electricity supply before attempting any installation / maintenance of any kind. Do not attempt to modify this unit in any way and only use the recommended parts for replacement.

- The PR pressurised pond filter should never be run dry as this will cause the unit to overheat and cause permanent damage.
- All connections must be earthed.
- The power cord of this appliance cannot be replaced; if the cord is damaged, the appliance should be discarded. Never cut the cord.
- Do not connect to any voltage other than that stated.
- Do not place in liquids other than water.
- Do not use with water above 90°F or 30°C.
- Do not carry or pull the unit by its electrical cable.
- Do not use this unit if it has a damaged cord, if it is malfunctioning or it is dropped or damaged in any manner
- Do not attempt to modify this unit in any way and only use attachments and the recommended parts for replacement recommended by the manufacturer.
- Before installing, maintaining or handling your equipment, or before placing your hands in your pond, ensure that the unit is disconnected from the electricity supply.
- Always disconnect any electrical devices when not in use.
- Carefully examine your pond system after installation. Do not connect the unit to the mains if there is water on any parts not intended to be wet.
- Do not look directly at the UV light when it is operational.
- Before operating your unit observe that water is flowing through it - the UV requires constant flow to avoid overheating.

- To avoid injury, do not touch hot or moving parts such as, but not limited to UV bulbs or impellers.
- During maintenance ensure all O-rings are present and intact.
- If the appliance shows any signs of water leakage or the RCD unit switches off, disconnect the unit from the power supply and consult the retailer where you purchased the unit.
- Do not install or store this unit where it will be exposed to temperatures near to 0°C / 32°F. In freezing conditions, remove and store the unit in a sheltered area ensuring all water has been drained from the filter.
- Do not bury the cord for this unit. Ensure it does not cause a trip hazard or it at risk from damage from lawn mowers, strimmers or other garden equipment.
- Ensure the PF is located at least 2 metres from the pond edge.

Please note – this appliance can be used by children aged from 8 years and above and persons with reduced physical, sensory or mental capabilities or lack of experience and knowledge, provided they are given supervision and instruction concerning use of the appliance and understand the hazards involved. Children must not play with the appliance. Any maintenance must not be made by children without supervision.

ELECTRIC

This unit comes complete with a generous supply of 3 core cable, however should any additional cable be required, the use of an approved waterproof cable connector with a proper rating is essential. A cord rated for less amperes or watts than the appliance rating may overheat.

Please Ensure:

- The power supply must be earthed and fused at 3amps.
- You regularly inspect the cable for damage and deterioration.
- Do not connect to any voltage other than that stated.
- You consult a qualified electrician if in doubt about any aspects of wiring.
- A residential current device (RCD) is used for additional safety
- You have complied with Local Electricity Authority regulations if permanently installing to the mains supply.

Please Ensure: The power supply must be earthed and fused at 3amps. Regularly inspect the cable for damage and deterioration. Consult a qualified electrician if in doubt about any aspects of wiring.

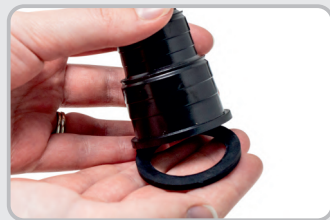
CHOOSING YOUR FILTER LOCATION

- The pressure of your unit depends on many factors such as location (height and distance from pond), power and location of connected pump (L/H), stock density and hose dimensions. To enhance pond water quality, we recommend considering these factors to ensure maximum efficiency and avoid low return pressure.
- Ensure the PF is located at least 2 metres from the pond edge.
- The PF is suitable for burying up to the head rim of the unit. Please ensure you can still access the body for maintenance purposes. Burying the unit will help reduce the distance between the filter and the pond and provide higher return water pressure.

INSTALLATION & USE

Please read the below instructions carefully before beginning to set up your filter system. **DO NOT CONNECT THE UNIT TO THE MAINS UNTIL SET UP IS COMPLETE AND UNIT IS FILLED WITH WATER.**

- 1.** Prior to installing the unit, examine the quartz sleeve and UV bulb to make sure these have not been damaged in transportation (see maintenance section). Handle with care. Do not hold UV bulb with bare hands as this can affect performance.
- 2.** Clean filter media and foams - remove the filter foams and bio balls and clean them with some pond water.
- 3. Connect the hoesetails** - clear hoesetail is interchangeable with the black hoesetail. It has a spindle that indicates the flow rate so you can use it on the inlet/outlet. Sometimes you may notice the spindle stops rotating, this is okay as long as the water runs through the unit.



Make sure the O-rings are placed smooth side up to the hoesetail (see image on the right for reference). This will prevent leakage.

- 4. Position the filter system unit** - place your PF unit at least 2 metres away from pond. This is to ensure it doesn't fall into the pond.
- 5. Connection to the water inlet** - connect your pump (not included) to the hoesetail which has an arrow pointing towards the filter.
- 6. Connection to the water outlet** - connect a suitable hose to the hoesetail with the arrow showing away from filter. Secure with hose clamps to ensure this is water tight.
- 7. Connect your PF to the mains** - Connect the unit to the mains using a residual current device (RCD) for additional safety.
- 8. Switch on your unit at the mains** - turn on the operation by switching on the unit at the mains.

UVC OPERATION

- Always ensure that the filter has water flowing through the unit prior to operating the UV.
- Never look directly at the UV light when operational.
- Check that the UV is operational visually using the UV indicator.
- Never operate the UV lamp outside its housing.
- Never operate the UV lamp in a housing that's defective.

MAINTENANCE

To ensure optimal performance and that your unit functions correctly, regular maintenance is essential. Failure to do so may result in damage to your unit and may invalidate your warranty.

We recommend that a regular cleaning and maintenance schedule is followed to ensure responsible fishkeeping. Depending on water volume and stocking levels, regular cleaning of the filter media, foams, and inlet/outlet pipework will help ensure that the product works efficiently and your pond remains healthy.

For further maintenance guidance, please see the table and additional information below:

	1 MONTH	3 MONTHS	6 MONTHS	ANNUALLY
All Pipework	Clean & Inspect			
Hosing				Clean & Inspect
O-Rings	Clean & Inspect	Lubricate & Clean		Replace
Filter Foams	Clean & Inspect			Replace as required (1-2 years)
UV Bulb				Replace
Quartz Sleeve			Clean & Inspect	Replace after 2 years
Other Media (Bio Balls)	Clean & Inspect			

O-rings

It is vital that O-rings are regularly inspected and replaced as the rubber watertight seal will perish over time, which may cause your unit to leak. Before replacing your o-rings, ensure they are well lubricated to ensure the seal is kept water tight.

Filter Maintenance

In general, it is recommended to disconnect your filter and clean the pipes, impeller and filter media monthly. Pipework will become blocked with waste and protein slime over time, so regular cleaning is important for optimal performance.

The frequency of how often you will need to clean and inspect your unit of course will depend on a lot of factors like how dirty the water is when you first start using your all-in-one system, your pond volume and also how many fish you have. How often you feed your fish and seasonal light levels will also affect how quickly your pond water gets dirty and will need to be taken into consideration when planning how often to clean your filter system.

Filter Media

The filter media provided with your unit and their positioning within the filter body are designed to give complete and optimum filtration for your pond.

Fine & coarse Filter Foams	Mechanical Filtration	Remove small waste particles from the water.
Bio Balls	Biological Filtration	Create environment for nitro-bacteria to cultivate and help oxygenate the water.

IMPORTANT! Always use water from your pond to clean your filter sponges and media. Do not use mains water or any cleaning products to clean your media.

When replacing media in your filter, do not replace more than 50% of your media at once. This is to ensure that the nitrifying bacteria present in the old media are able to repopulate in the newly added filter media.

General Maintenance

It is recommended that every 3-4 weeks you perform maintenance on the PF Filter.

IMPORTANT! Disconnect mains electricity supply before handling or attempting maintenance.

Opening your filter - the unit's head can be removed by unfastening the head clasp on the side of the filter body.

The PF has a handy indicator located at the top of its head. Green means your filter is running correctly whilst orange means it needs to be cleaned.



Remove and clean filter sponges and filter media - clean through the included media and coarse foam. In order to remove the filter sponges untwist the plate holder in an anti clockwise direction.

Rinse them in pond water to prevent damaging the beneficial bacteria which help maintain a healthy pond.



Quartz sleeve & UV bulb - remove the top part of the filter by unscrewing screws from the unit's head. Rotate the ballast in a clockwise direction and gently lift up the UV bulb.



Remove the quartz sleeve from the unit by unscrewing two screws (as shown in the image below). Gently pull it out to remove it.

The quartz sleeve can be coated in limescale build up in hard water areas. This should be carefully removed from the quartz sleeve and cleaned with a soft damp cloth.



When reassembling your unit you must make sure the orange O-ring sits on top of the lid as seen in the image above. This will enable you to correctly reattach the quartz sleeve.



You can also access the quartz sleeve and outlet by unscrewing several screws from the outlet flow connector (as shown in the image above).

Clean body and all attachments. Reassemble.

Adding All Pond Solutions Filter Start Bacteria Treatment after filter maintenance will help replenish beneficial populations of bacteria and is highly recommended during the first two months of operation when the filter is slowly being colonised.

IMPORTANT! When reassembling your unit you must replace all O-rings as per the parts diagram as otherwise this can cause the unit to leak which will cause permanent damage to the UV operation.

Replacing the UV Bulb

NEVER look directly at the UV light.

When replacing your UV bulb, use this time to clean your quartz sleeve and carefully examine for any damage or cracks. Take care when handling the quartz sleeve and UV bulb to avoid any damage to the glass.

1. Follow the steps from the general maintenance section to access the bulb.
2. Once cooled, UV bulb can be safely removed by gently moving it from side to side and pulling free of unit.
3. You can now replace your UV bulb and reassemble the unit.

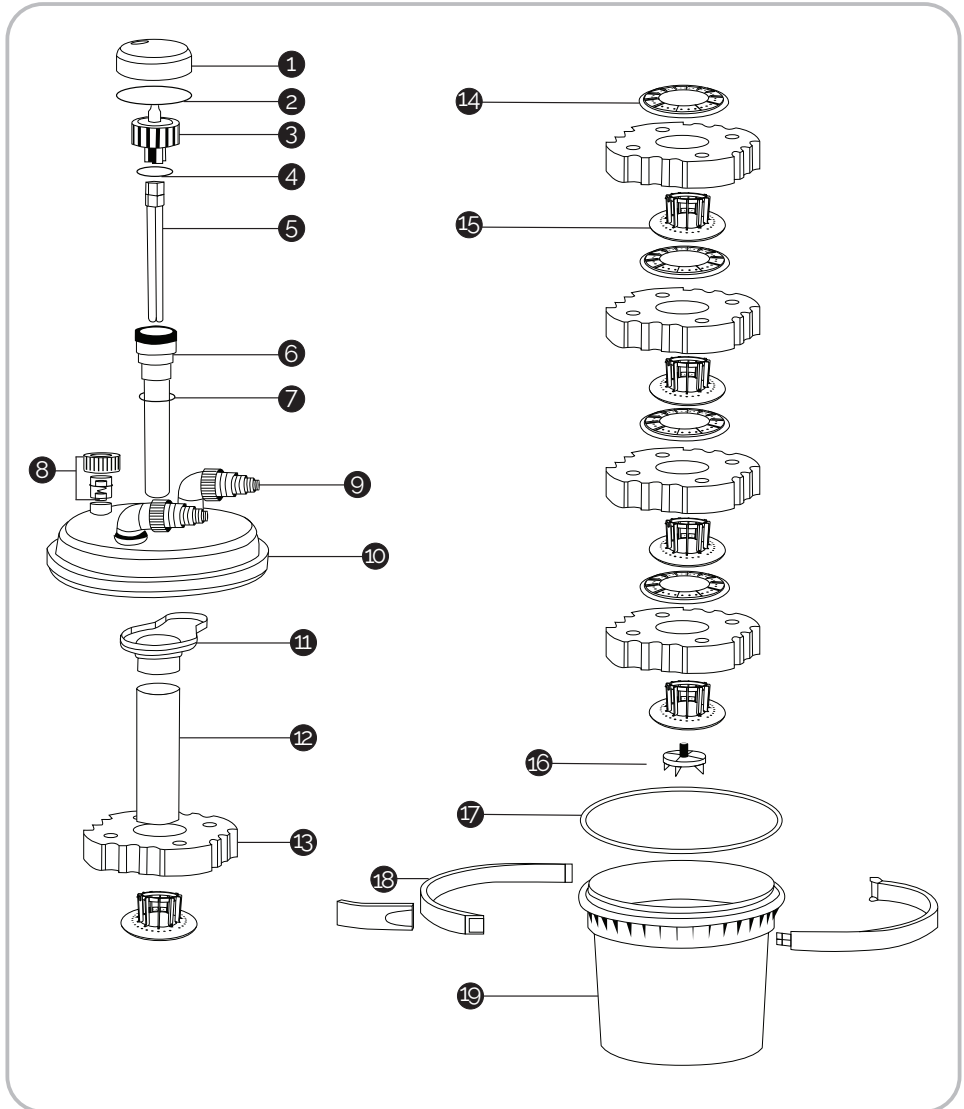


IMPORTANT! Check regularly that your UV light is operational by looking at the UV light indicator located on the top of the filter casing. Always change your UV bulb every twelve months regardless of it working or not, as its performance will lessen by this stage.

The PF-8000 & PF-12000 use an 11w two pin PLS UV bulb.

The PF-20000 uses an 18w two pin PLL UV bulb.

PARTS DIAGRAM



1 BALLAST COVER

2 O-RING

3 UV BALLAST

4 QUARTZ SLEEVE O-RING 1

5 UV CLARIFIER

6 QUARTZ SLEEVE

7 QUARTZ SLEEVE O-RING 2

8 CLEANING INDICATOR

9 HOSETAIL

10 FILTER LID

PARTS DIAGRAM

11	OUTLET FLOW CONNECTOR
12	QUARTZ SLEEVE PROTECTOR
13	FILTER SPONGE
14	TOP FILTER HOLDER

15	BOTTOM FILTER HOLDER
16	PLATE HOLDER
17	FILTER BODY O-RING
18	CLASP
19	FILTER BODY

SPECIFICATIONS

MODEL:	PF-8000	PF-12000	PF-20000
UV POWER (WATTAGE):	11W	11W	18W
MAX FLOW RATE:	9000 L/H	10000 L/H	10000 L/H
DIMENSIONS (LxWxH) (mm):	380 x 380 x 420	380 x 380 x 530	380 x 380 x 740
INLET / OUTLET HOSE ADAPTER:	20mm / 25mm / 32mm / 38mm	20mm / 25mm / 32mm / 38mm	20mm / 25mm / 32mm / 38mm
SUITABLE FOR DECORATIVE PONDS UP TO:	8000L	12000L	20000L
SUITABLE FOR PONDS WITH SMALL MIX OF FISH UP TO:	5000L	9000L	12000L
SUITABLE FOR PONDS WITH HEAVY STOCKED KOI UP TO:	5000L	6000L	10000L
CABLE LENGTH:	5m (Plug not included)	5m (Plug not included)	5m (Plug not included)
FILTER VOLUME:	8L	12L	20L

TROUBLESHOOTING

UV Indicator is not Lighting Up

If the UV indicator on the top of the filter lid is not lighting up follow these troubleshooting steps:

1. If you find that the UV light is not operational, check that you have power from the mains supply.
3. If you do have power from the mains supply, clean the UV indicator. Check if you can see the UV is operational through the viewing hole on top of the unit. If you aren't able to see it, try performing a safety override. Locate the safety override switch on the ballast end next to the UV bulb fitting (as shown in the image on the right).



IMPORTANT! NEVER look directly at the UV light. Press and hold the small thin silver switch when the power is on and the bulb should ignite. Please test in a dark/ shadowed place and do not look directly at the bulb – we recommend covering the bulb with kitchen roll or similar. You should still be able to see the glow of the bulb through this.

4. If the above does not solve the issue replace the UV bulb.
5. Please check for signs of damage or water ingress to quartz sleeve and bulb area. You might need to replace your quartz sleeve and/or O-Ring if that's the case.
6. If you find that the UV light is still not operational after the bulb replacement, the UV ballast may have developed a fault and you will need to contact the supplier of your unit to obtain replacement parts.

Please remember that UV bulbs for use in ponds should be replaced every 12 months.

Slow Flow Rate

1. Rinse unit's foams making sure they are free of debris.
2. Ensure that the inlet hose connector has been cut correctly to size, if not this will restrict the flow from the pump into the filter.
3. Ensure that the inlet hose is not kinked or crushed.

Green Water or Cloudy/Brown Water?

In order to correctly identify if you have green water or cloudy/brown water, a settlement test should be carried out.

Take a jar of pond water and allow to settle for 24 hours.

Green Tinge - If your jar is showing mostly green tinged water or has green particles floating in it, you most likely have a bit of an algae problem (follow the green water trouble shooting guide).

Brown Tinge / Water with Sediments - this indicates that you have organic debris decomposing in your pond. This can be particles from dead leaves, twigs and other plant debris that are breaking down (follow the brown water trouble shooting guide).

The UV Bulb is on But My Pond is Green

There are a lot of different factors which contribute to this type of issue and it may not be the UV system at fault. The UV clarifier will work to maintain rather than transform water quality so you may need to add treatments to clear poor quality water or consider a heavy water change.

Algae growth in water can be due to high phosphate and nitrate and green water is heightened in the summer period due to the extra sunlight so it is also advised that a water test is carried out.

If the UV light is working then the product is functioning correctly. The position of the pond should also be considered, as this affects how much sunlight is directly falling on the pond. Algae growth is very likely to require a treatment to resolve the growth. Consider purchasing the All Pond Solutions Green Water treatment or Blanketweed treatment.

The orientation of the garden can also be an issue; south facing gardens inevitably get more sunlight and can cause ponds to be greener in the summer if exposed all day. Try and shade your pond water surface, plants are a great way to do this.

My Pond Water is Cloudy/Brown

1. Make sure the unit is turned on 24 hours a day. Continuous running is needed to maintain a clean and healthy pond.
2. Remove pond waste and leaves and carry out a partial water change. If sludge is present treat your pond with All Pond Solutions Anti Sludge treatment.

- 3.** Reduce feeding. Overfeeding introduces a lot of organic waste and is one of the main causes for cloudy water problems.
- 4.** Make sure to perform regular water changes, check your unit is clean and adequate for your pond size and do not overstock it.

My filter is leaking

- 1.** Check that the inlet/outlet caps and O-ring have been correctly assembled and that they are hand tight. Ensure the O-rings are intact, well lubricated and not twisted or damaged.
- 2.** Always secure the inlet hose and outlet hose with a jubilee clip.
- 3.** If you find that the unit is still leaking after the above checks or there is an obvious casing crack, you will need to replace the body casing on the unit.

My Unit is Cutting Out

- 1.** Rinse unit's foams making sure they are free of debris.
- 2.** Inspect the quartz sleeve for hair line cracks and ensure that all O-rings are in place and well lubricated.

If none of the above resolves your issue, or you require spare parts for your filter, please contact the supplier of your unit.

WARRANTY

The All Pond Solutions PF Filter range is guaranteed against defects in material or workmanship under normal pond usage and comes with 24 months warranty for all electrical parts. The warranty period commences from the date of purchase.

If you require support on how to use your unit, replacement parts or if your filter develops a fault during the warranty period, please contact the supplier of your unit.

Non-replaceable, non-perishable and non-serviceable parts will be repaired or replaced free of charge, once the unit is returned with all components along with a valid proof of purchase and postage paid. We reserve the right to replace or repair the unit at our discretion.

Please be aware that perishable parts that are subject to normal wear and tear, such as impellers, impeller covers, motor seals and UV bulbs, are not covered by your warranty and a charge may be required for replacements of these.

This warranty does not apply to any unit that has been subjected to misuse, accidental damage, negligence, tampering or customisation. It does not apply to units which have been assembled incorrectly, improperly maintained, or where the instructions and safety information in this manual has not been followed correctly.

No liability is assumed with respect to loss or damage to livestock or personal property irrespective of the cause thereof.

Please ensure that only genuine All Pond Solutions components are used when completing a replacement or repair. Spare parts are available at our official website or from your local supplier.

Before returning your unit under warranty terms, check that all setup and maintenance instructions have been correctly followed. If you are in doubt, please contact your local aquatic retailer for further advice before returning the product.

This does not affect your statutory rights.



www.allpondsolutions.co.uk

All Pet Solutions Limited Trading as All Pond Solutions
Unit 203 Riverside Way, Uxbridge, Middlesex,
England, UB8 2YF